

**GUIDELINES
FOR HANDLING
TANALISED®
L.O.S.P. TREATED
TIMBER**



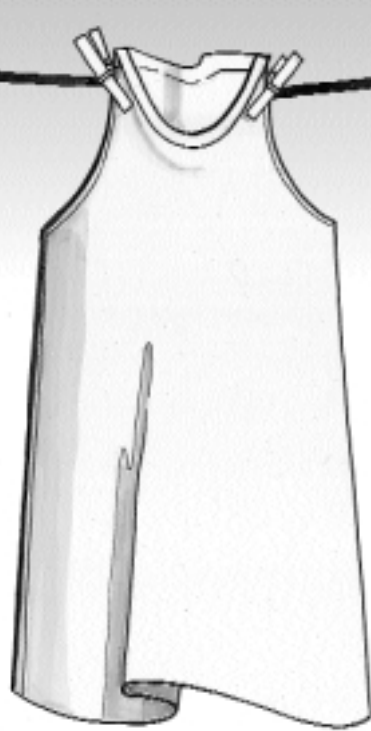
FRAME H2 & CLEAR H3

SAFETY & HANDLING GUIDELINES FOR TANALISED® L.O.S.P. TREATED TIMBER



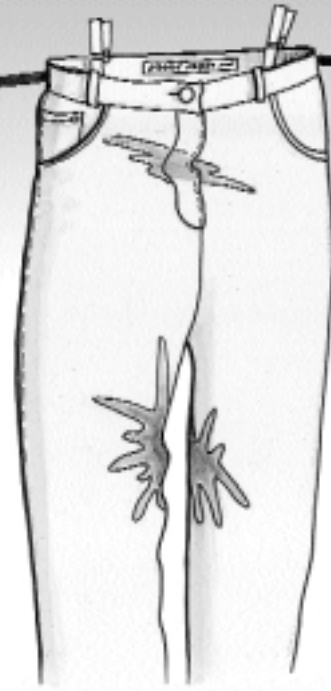
◆ With dry timber, **wear cotton or light leather gloves** for protection against splinters and cuts during general handling. If the timber is still damp from the treatment, **solvent resistant gloves** are recommended. Cuts and abrasions should be protected from sawdust while machining or sawing treated timber.

◆ Keep air borne wood dust levels below Worksafe recommended levels. **Wear an organic vapour filter mask** (activated carbon) when sawing, sanding or machining treated timber. Wherever possible, these operations should be performed in a well ventilated area to avoid accumulation of airborne sawdust or solvent vapour from the treated wood. Use mechanical air extraction if necessary. Suitable nuisance level organic vapour filter mask products (with or without exhalation valves) are available from Bilsom or 3M distributors.



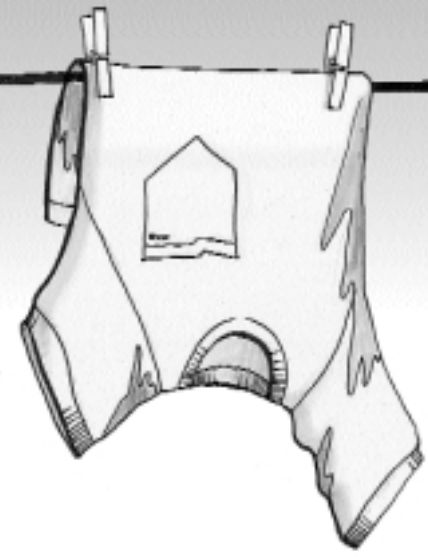
◆ **Wear an impervious work apron** to protect clothing when working with solvent damp timber such as when opening up packs or carrying freshly treated boards.

◆ **Wear safety glasses** or goggles when using power tools on the treated timber to protect the eyes from flying particles and any airborne solvent residues.

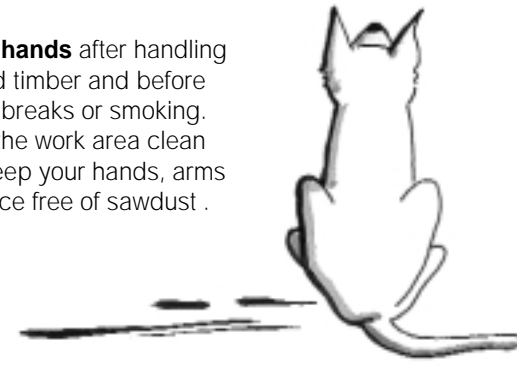


◆ If preservative or sawdust accumulates on clothes, **wash separately** before reuse. Change out of any clothing that becomes contaminated with solvent or preservative fluid.

◆ **Wash hands** after handling treated timber and before meals breaks or smoking. Keep the work area clean and keep your hands, arms and face free of sawdust .



◆ The preservative chemicals in Tanalised LOSP treated timber are toxic to insects and fungi, which is their purpose. Under normal circumstances in the end use situation, LOSP treated timber is safe for people, plants and animals although care should be taken with specific occupational situations as detailed here. Remember, if you experience any undesirable effects when working with the product, such as headache, dizziness, skin or eye irritation, cease work and consult your supervisor or an occupational safety advisor. Material Safety Data Sheets (MSDS) are available from your Tanalised timber supplier or Koppers Arch for further information.



◆ What is TANALISED® L.O.S.P. treated timber?

It is timber that has been pressure impregnated with a Koppers Arch Light Organic Solvent Preservative in an approved industrial treatment plant. The process drives the preservative deep into the cellular structure of the timber to provide protection against fungi, termites and other insects.

LOSP has a number of advantages for engineered, re-manufactured and structural timber products.

Two main versions are used - Tanalised Frame H2 for interior building applications such as frames and trusses, and Tanalised Clear H3 for exterior, above ground applications such as pergolas and cladding.

LOSP preservative contains fungicide and/or insecticide active constituents as well as other materials such as colouring or water repellent agents depending on the application. The solvent is a refined white spirits type which is commonly used in household products such as paints. All timber preservatives are approved by the Australian Pesticides & Veterinary Medicines Authority as well as state based regulators.

◆ Is it safe to use?

Yes, Tanalised LOSP treated timber is safe to handle and use given a few simple precautions, most of which are applicable to normal untreated timber. However in rare cases some people may experience temporary skin irritation when handling the material. Skin irritation and other undesirable effects are more likely if the timber is not dry.

If irritation occurs, cease handling the material and review your personal protection measures. In a work situation, inform your supervisor or safety manager if any undesirable effects occur.

◆ What causes the odour?

The treatment process initially leaves the timber damp with the treatment fluid. The odour from the solvent will be noticeable as the treatment dries. The time required for the solvent to evaporate and dry depends on a number of factors including air flow around the timber, temperature and humidity. In ideal conditions, the treatment will dry within a few days. However, inner boards in a large pack of treated timber may not dry for many weeks. The odour may also be noticed when cutting the timber.

◆ Product Storage and Disposal

Tanalised LOSP treated timber should be stored in a well ventilated, under cover area. Where possible packs should be opened a day or two before use to allow any solvent vapours in the inner boards to evaporate. Off-cuts and sawdust from LOSP treated timber are not hazardous waste. For normal domestic and trade users, dispose of waste through normal waste collection and disposal services. Treated timber off-cuts should not be used as domestic heating or cooking fuel. Treated off-cuts and waste are not recommended to be supplied for mulching or animal bedding.

◆ For further information contact:

Your **Tanalised** timber supplier, or;

Koppers Arch Wood Protection (Aust) Pty Limited
ABN 95 003 780 872

10th Floor, 15 Blue Street
North Sydney NSW 2060

Phone: (02) 9954 5433 or (07) 3888 2583

Fax: (02) 9954 5467 or (07) 3888 3972

www.tanalised.com

GHLOSPDL01 February 2004

© Tanalised is a registered trade name of Koppers Arch Wood Protection.

